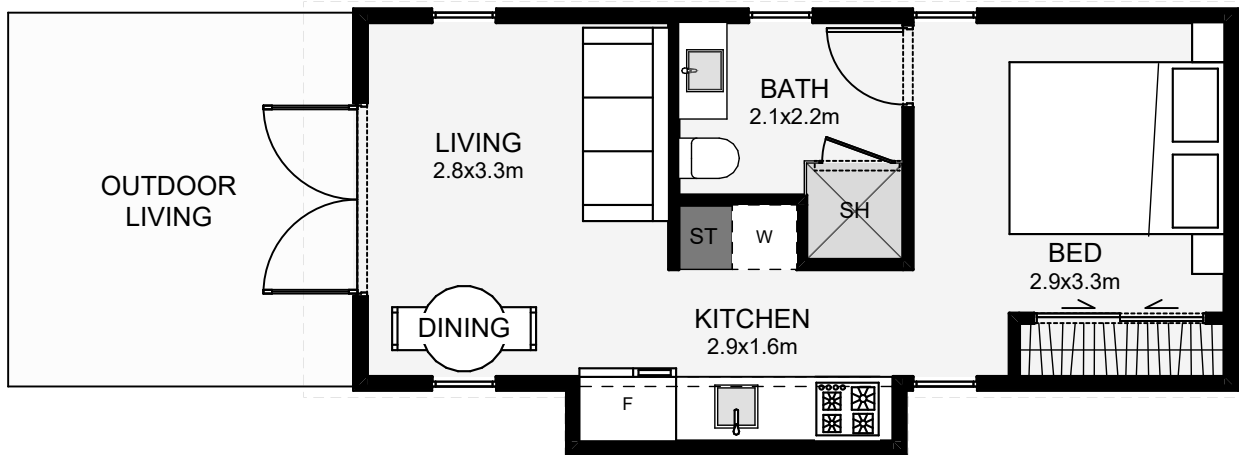




This small 30m<sup>2</sup> dwelling is designed to suit properties with limited space or where a narrow build is preferred. The kitchen and bathroom separate living from sleep quarters with the option for a sliding door between. The mono-pitch roof is designed to give you the opportunity of having a high ceiling in the living, making the space feel larger in size. If you're looking for a small dwelling with modern styling, you've just found it!



Floor Area: 30m<sup>2</sup>



Contact us:

Phone: 0204 105 3535

Email: woodsmen.team@gmail.com

www.woodsmenconstruction.co.nz

